



Big Dutchman®



Tap for
Easy Read

UNIVENT Starter

The professional manure belt system
for successful pullet rearing



Big Dutchman®

Southern Africa

Contact Us



www.bigdutchman.co.za



sales@bigdutchman.co.za



+27 11 452 1154



+27 64 748 1054

UNIVENT Starter – the rearing system for experts

The UNIVENT Starter rearing system from Big Dutchman is a true bestseller. This well-proven system not only provides excellent rearing results, but is also of a high quality.

To meet the varied requirements of all our customers in an ideal way, we offer UNIVENT Starter with and without manure belt ventilation.

The start tier

Each compartment has two doors that can be slid open to the sides, creating a large opening of two thirds of the total width: an important advantage when the birds have to be moved in or out or to other compartments. The wire flooring has a mesh width of 1 x 1.5 inches (both start and grow tiers). An insert mat ensures a secure foothold for the chicks, especially during their first days of life. Cleaning after the batch is still fast and easy. A bottom wire grille of ¾ x ¾ inches (without insert mat) for the start tier is also available.

Feed supply

From day one, the chicks can easily reach feed in a trough installed outside the system. Soiling of the trough, e.g. because of the chicks' droppings, is therefore avoided. Access to the feed is regulated centrally and continuously by means of an adjustable rail, always depending on the birds' age. Feeding windows can be used at the customer's discretion. The inward rim of the trough prevents feed wastage. The CHAMPION feed chain distributes the feed quickly, evenly and reliably in all tiers. The feed level slide at the feed column makes adjustments to the feed level easy. Alternatively, a feed cart is available.

Water supply

The height of the nipple drinker line in the start tier can be adjusted from one central point to correspond to the size of the birds. The chicks therefore have adequate water supply from day one. The drinker line is suspended every 60 cm, ensuring good stability. In the standard version, each cage contains three nipples with drip cup. The number of nipples per cage can be increased upon request. The central cup can be detached and replaced by an open round cup. This option makes drinking easier for the chicks during their first days of life.

The grow tier

After approximately six weeks, the birds are distributed evenly to all tiers of the system. UNIVENT Starter is also available without grow tier, i.e. with start tiers only.

Feed supply

The birds eat directly from the feed trough. The adjustable rail in the start tier should be at the very bottom so that pullets eat over the rail until they are moved out. The feed chain has a speed of 12 m/min (18 or 36 m/min are available as an option).

Water supply

In grow tiers, the nipple drinkers are fixed at the back wall of the cage, where each bird can easily reach four stainless steel nipples. We recommend using a rinsing system.

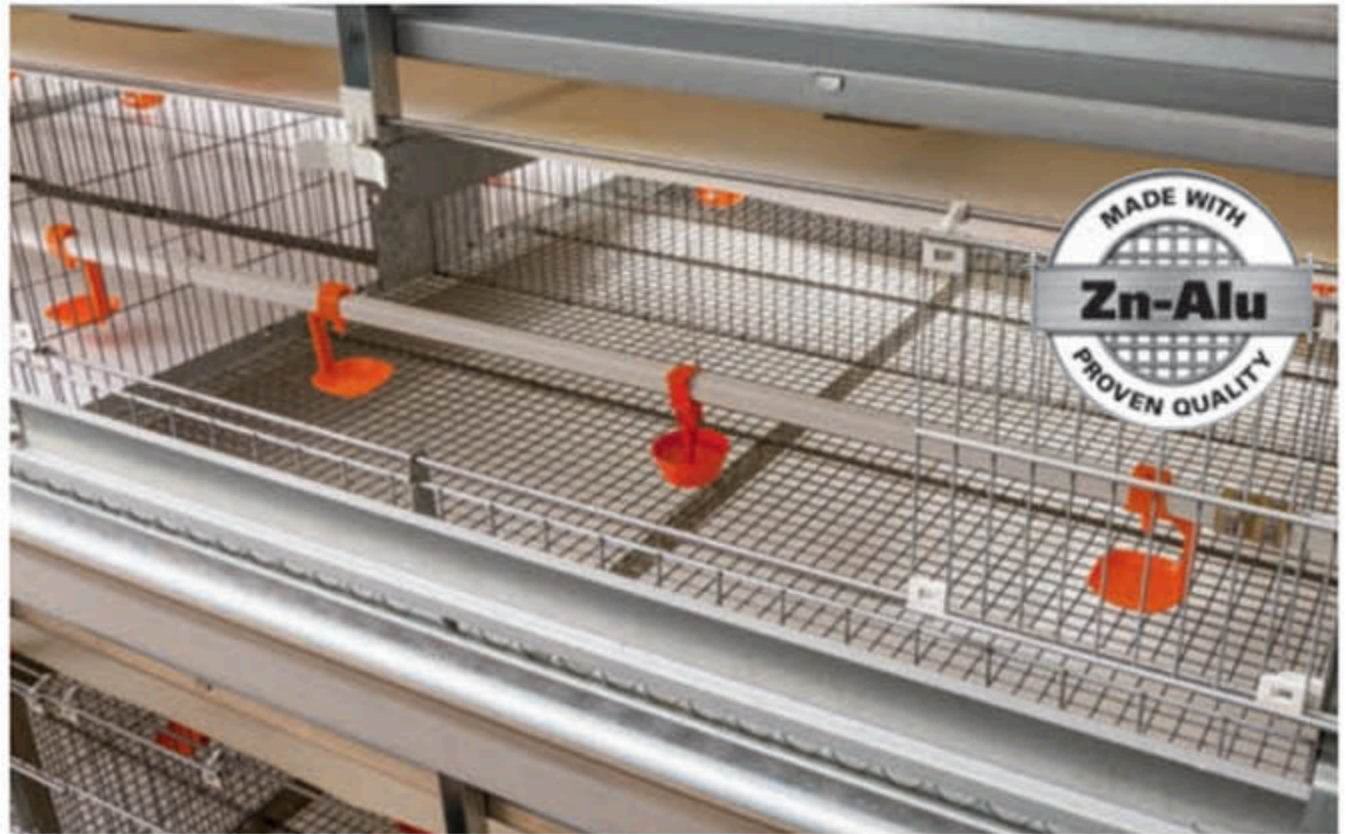
UNIVENT Starter consists of two different tiers to satisfy the differing needs of both day-old chicks and pullets:

- ✓ the start tier and
- ✓ the grow tier.

The quality and uniformity of pullets are crucial factors with a decisive influence on laying performance later on. Essential prerequisites for successful pullet rearing

therefore include:

- ✓ uniform and rapid feed distribution;
- ✓ a hygienic supply of sufficient drinking water;
- ✓ wire partitions for improved bird inspection;
- ✓ the reduction of ammonia emissions.



Start tier UV-S 680 with open round cup for easy water intake during the first days of rearing (option)



Start tier with continuous eating window and inward trough rim to avoid feed wastage



Centrally installed winch to adjust the height of the drinker line

Product quality

All wire meshes used for bottom wires, side parts and cage fronts are zinc-aluminium coated. This special alloy resists corrosion and rust more effectively than other materials, thus guaranteeing a longer service life.



Grow tier UV-S 630 – four stainless steel nipples provide the birds with fresh water



Rinsing system for highest hygiene standards (option)



Manure belt end set with scrapers and central adjustment



Manure belt idler roller with cleaning auger (option), removes dust and feathers from the returning belt

Manure removal and manure drying

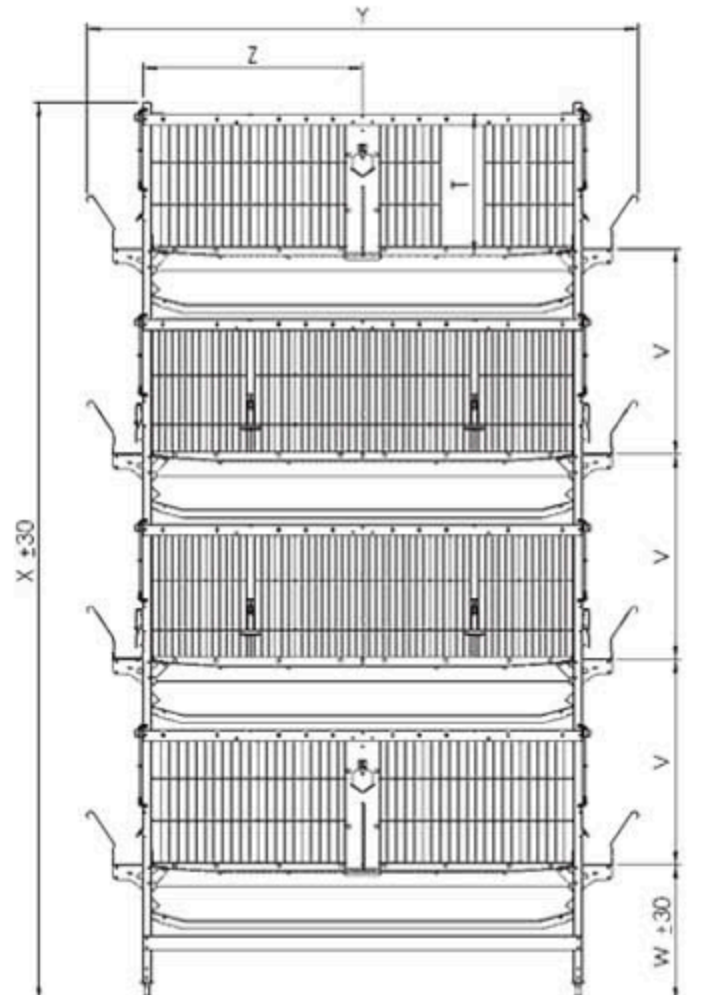
The manure drops onto endless welded belts made of polypropylene that are installed below the system and that transport the manure to the cross manure removal. Using a cross belt, the manure is either loaded directly onto trucks or transported into a manure storehouse. Systems with manure belt ventilation are equipped with air ducts above the manure belts. The air from these ducts dries the manure, which significantly reduces ammonia emissions from the house: an important advantage.

Advantages

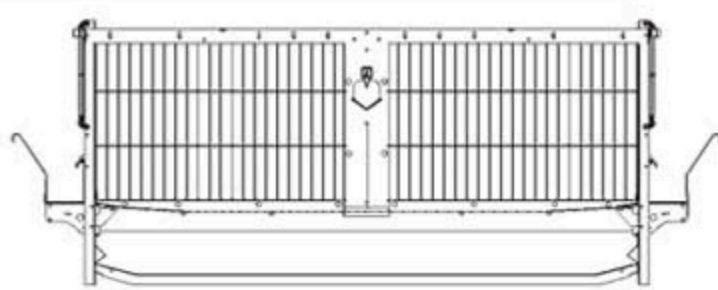
- ✓ well thought-out system;
- ✓ modular design allows flexible arrangement of start and grow tiers;
- ✓ very easy to use;
- ✓ remarkably low mortality during rearing (often below two percent);
- ✓ feed trough with inward rim minimises feed wastage;
- ✓ feed troughs are mounted on supports for increased stability;
- ✓ simple assembly of three to eight tiers;
- ✓ high functional reliability;
- ✓ high corrosion resistance.

Technical data

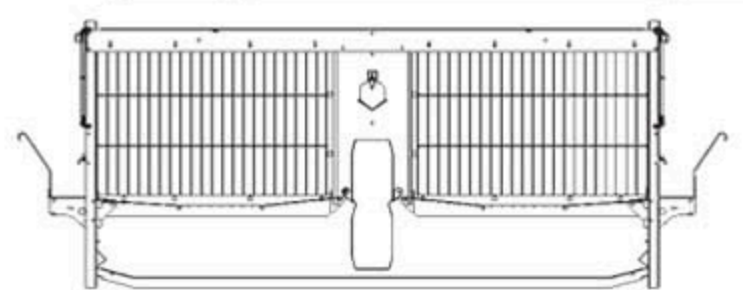
System type		UV-S 680 / UV-S 680a	UV-S 630 A
System height (X)	mm		
3 tiers		1990	2110
4 tiers		2580	2740
5 tiers		3170	3370
6 tiers with catwalk	3960	4200	
7 tiers with catwalk	4550	4830	
8 tiers with catwalk	5140	5460	
Tier distance (V)	mm	590	630
Height tier 1 (W)	mm	390	420
System width (Y)	mm	1700	1700
Cage depth (Z)	mm	680	630
Cage height	mm	405	415
Cage length	mm	1206	1206
Cage area	cm ²	8200	7598
Birds per cage			
– with 270 cm ² /bird		30	28
– with 300 cm ² /bird		27	25
– with 330 cm ² /bird		25	23
Rows/aisle width	cm		
– at a house width of 12 m		4/104	4/104



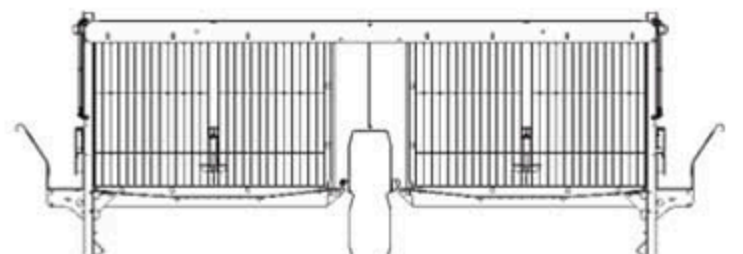
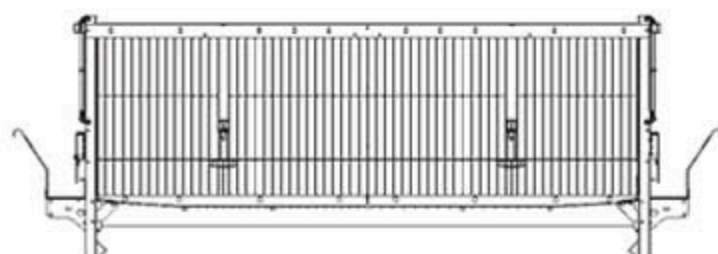
Cage cross sections



UV-S 680 – grow tier without air duct

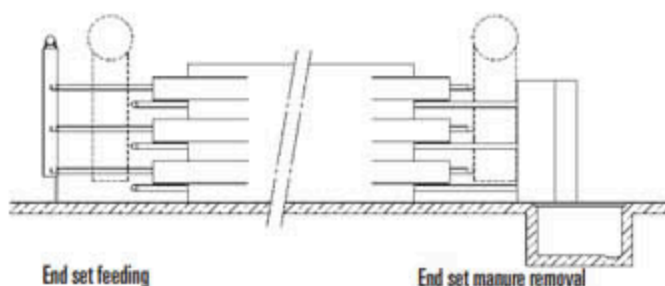


UV-S 630A – grow tier with large air duct

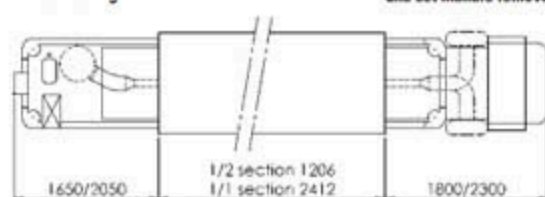


Planning example UV-S 680

Side view



Top view



Our recommendation:

An ideal combination of the individual elements of a house – cage system, house climate, manure storage, etc. – is the best prerequisite for optimum rearing results. Let our experts advise you in detail on all the options Big Dutchman can offer you for successful pullet rearing.